

Transforming the World
for Tomorrow, Global TOP 100

Transforming the World
for Tomorrow, Global TOP 100



JEONBUK
NATIONAL UNIVERSITY

Jeonbuk National University Now (2025)



Full time Faculty

1,060



Staff members

1,500



Enrolled Students

22,000

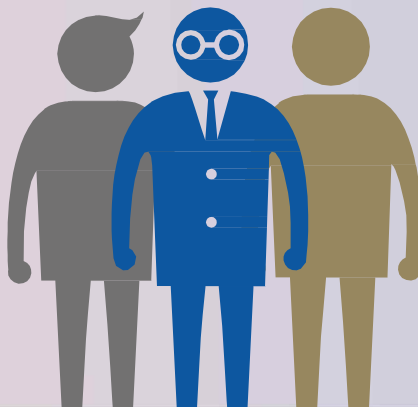


Alumni

250,000

Jeonbuk National University
is one of Korea's 10 national
flagship universities.

We seek to lead in national
development by fostering
student and faculty talent
through innovative education
and research.



5

Campuses

2,000

International
Students

15

Colleges

7,000

Ph.D Recipients

Greatness of Jeonbuk National University



1st
among
flagship universities
The JoonAng Daily
(23)

1st
among
flagship universities
Leiden Ranking
(22~22)

2nd
among
flagship universities
QS World University
Ranking(22)

2nd
among
flagship universities
THE World University
Rankings(22)

No.176
Polymer
Engineering

No.191
Chemical
Engineering

No. 212
Condensed
Matter Physics

No. 230
Physical
Chemistry

No.240
Life
Science

No.258
Materials
Science

**Top 100 departments
in the world** (US NEWS, 23)

**Top 200 departments
in the world** (US NEWS, 23)



Among Flagship National Universities

Top **1**

Student Satisfaction For 6 consecutive years
(Korean Standard Association (KSA) 2019~2024)



Excellence in Education

Investing fully in Student's Education

JBNU's reputation from outside

No.1

Regional
Universities

Student Satisfaction
By Korea Standards
Association
(2019~2024)

AClass

University Innovation
Support Project's
comprehensive evaluation
(2021)

3

Consecutive
Years

Regional Leading
University
Fostering Project
(2021~2023)

5,797

Total Capacity of
Residence Hall



1,842

Number of
International
Students
(2023)



No.1

University Library
Evaluation in the Nation
The Best Institution
from pilot evaluation



JEONBUK
NATIONAL UNIVERSITY

The 15 Colleges of JBNNU

- College of Nursing
- College of Business & Economics
- College of Engineering
- College of Agricultural Life Sciences
- College of Education
- College of Social Sciences
- College of Human Ecology
- College of Veterinary Medicine
- School of Pharmacy
- College of Arts
- College of Medicine
- College of Humanities
- College of Natural Sciences
- School of Dentistry
- College of Environmental & Bioresource Sciences

Departments

※ College of Medicine, Dentistry, Veterinary Medicine, Nursing are excluded

※ **English Track:** This track verifies and selects English proficiency, and more than 50% of the credits required for graduation is taught in English, Korean Track: classes conducted in Korean

※ Natural Science Field : N, Humanities Field : H, Arts Field : A

1. Jeonju Campus

Track	College	Admission Unit (Division)	Department (Major)	Homepage	Recruit		Field
					Fresh man	Transfer	
English	University Headquarter	School of International Engineering and Science	Major of Engineering and Science	https://sies.jbnu.ac.kr	O	O	N
	Humanities	The School of International Studies	International Studies Major	https://tsis.jbnu.ac.kr	O	O	H
Korean	Engineering	Engineering Division 1	Architectural Engineering	http://archi.jbnu.ac.kr	O	X	N
			Mechanical Engineering	http://me.jbnu.ac.kr	O	O	N
			Mechanical Design Engineering	http://mdesign.jbnu.ac.kr	O	O	N
			Nano-Bio Mechanical System Engineering	http://mdesign.jbnu.ac.kr	O	O	N
			Mechanical System Engineering	http://mse.jbnu.ac.kr	O	O	N
			Urban Engineering	https://urban.jbnu.ac.kr	O	O	N
			Biomedical Engineering	https://biomedical.jbnu.ac.kr	O	O	N
			Industrial and Information Systems Engineering	https://ise.jbnu.ac.kr	O	X	N
			Software Engineering	https://software.jbnu.ac.kr	O	X	N
			New Materials Engineering (Electronic materials Engineering)	http://materials.jbnu.ac.kr	O	O	N
			Major of IT Convergence Mechatronics Engineering	http://cte.jbnu.ac.kr	O	X	N
			Major of IT Applied System Engineering	http://itase.jbnu.ac.kr	O	X	N
			Mineral Resources&Energy Engineering	https://res.jbnu.ac.kr	O	O	N
			Civil Engineering	https://civil.jbnu.ac.kr	O	O	N
			Environmental Engineering	https://envi.jbnu.ac.kr	O	O	N
		Engineering Division 2	Computer Science Engineering and Artificial Intelligence	https://cse.jbnu.ac.kr	O	X	N
			Quantum System Engineering	https://atom.jbnu.ac.kr	O	O	N
	Commerce	Commerce Division	Business Administration	https://business.jbnu.ac.kr/	O	O	H
			Economics	https://econo.jbnu.ac.kr/	O	X	H
			International Trade	https://trade.jbnu.ac.kr/	O	O	H
			Accounting	https://account.jbnu.ac.kr/	O	O	H

Track	College	Admission Unit (Division)	Department (Major)	Homepage	Recruit		Field
					Fresh man	Trans- fer	
Korean	Agriculture and Life Sciences	Agriculture and Life Sciences Division	Food Marketing	https://agrifm.jbnu.ac.kr/	O	O	H
			Agricultural Economics	https://frme.jbnu.ac.kr/	O	O	H
			Animal Biotechnology	https://animalbio.jbnu.ac.kr/	O	O	N
			Wood Science and Technology	https://wse.jbnu.ac.kr/	O	X	N
			Forest Environment Science	https://fore.jbnu.ac.kr/	O	O	N
			Food Science and Technology	https://foodtech.jbnu.ac.kr/	O	O	N
			Horticulture	https://hort.jbnu.ac.kr/	O	X	N
			Crop Agriculture and Life Science	https://crop.jbnu.ac.kr/	O	X	N
			Landscape Architecture	http://la.jbnu.ac.kr/	O	O	N
			Rural Construction Engineering	https://agrieng.jbnu.ac.kr/	O	O	N
	Education	English Education	English Education	https://englishedu.jbnu.ac.kr/	O	O	H
	Social Science	Social Science Division	Public Policy	https://cps.jbnu.ac.kr/	O	O	H
			Social Welfare	https://welfare.jbnu.ac.kr/	O	O	H
			Sociology	http://socio.jbnu.ac.kr/	O	O	H
			Media and Communication Studies	http://media.jbnu.ac.kr/	O	O	H
			Psychology	http://psy.jbnu.ac.kr/	O	O	H
			Political Science & Diplomacy	http://pol.jbnu.ac.kr/	O	O	H
			Public Administration	http://dpa.jbnu.ac.kr/	O	O	H
	Human Ecology	Human Ecology Division	Child Studies	https://child.jbnu.ac.kr/	O	X	H
			Fashion Design	http://fashion.jbnu.ac.kr/	O	O(2)	N
			Housing Environmental Design	https://housing.jbnu.ac.kr/	O	O	N
	Arts	Dance	Dance (Ballet/Dance Education Creator)	https://arts.jbnu.ac.kr/arts/index.do	O	O	A
			Dance (Korean Folk Dance)				
			Dance (Contemporary Dance/Choreography)				
		Industrial Design	Industrial Design(Product Design)	https://design.jbnu.ac.kr/	O	O(2)	A
			Industrial Design(Visual-Media Design)				
		Music	Music(Wind-String Instruments)	https://wz3.jbnu.ac.kr/music/index.do	O	O	A
			Music(Voice)				
			Music(Multi-media Composition)				
			Music(Piano)				

Track	College	Admission Unit (Division)	Department (Major)	Homepage	Recruit		Field
					Freshman	Transfer	
Korean	Arts	Korean Music	Korean Music (Instrumental Music)	https://arts.jbnu.ac.kr/arts/5551/subview.do	O	O	A
			Korean Music (Vocal-Composition Theory)				
	Humanities	Archaeology and Cultural Anthropology	Archaeology and Cultural Anthropology	https://culture.jbnu.ac.kr/	O	O	H
		Korean Language & Literature	Korean Language & Literature	http://korean.jbnu.ac.kr	O	O	H
		German Studies	German Studies	https://deutsch.jbnu.ac.kr/	O	O	H
		Library and Information Science	Library and Information Science	https://lis.jbnu.ac.kr	O	O	H
		Spanish & Latin american studies	Spanish & Latin american studies	http://spanish.jbnu.ac.kr/	O	O	H
		English Language and Literature	English Language and Literature	https://english.jbnu.ac.kr	O	O	H
		Japanese Studies	Japanese Studies	https://japan.jbnu.ac.kr/	O	O	H
		Chinese Language & Literature	Chinese Language & Literature	http://chinese.jbnu.ac.kr	O	O	H
		Philosophy	Philosophy	https://philos.jbnu.ac.kr/	O	O	H
		French-African Studies	French-African Studies	https://france.jbnu.ac.kr/	O	O	H
	Natural Sciences	Natural Sciences Division 1	Science studies	https://ss.jbnu.ac.kr	O	O	N
			Molecular Biology Major	http://molb.jbnu.ac.kr/	O	O	N
			Life Sciences Major	http://bio.jbnu.ac.kr	O	O	N
			Earth & Environmental Sciences	https://ees.jbnu.ac.kr/	O	O	N
		Natural Sciences Division 2	Physics	https://phys.jbnu.ac.kr	O	O	N
		Sport Science	Sport Science	https://sports.jbnu.ac.kr	O	O	N

※ Division of Convergence Technology Engineering(Major of IT Convergence Mechatronics Engineering) : Study for first two years at the Jeonju campus, and 3-4 year study at the Saemangeum Campus.

※ When applying to the College of Arts, applicants should choose their specific major and the Industrial design and Music require Korean Language Proficiency

※ O(2): Industrial design / Fashion Design department transfer course is only for the 2nd graders, not for the 3rd graders.

2. Specialized Campus (Iksan)

Track	College	Admission Unit (Division)	Department (Major)	Homepage	Recruitment		Field
					Freshman	Transfer	
Korean	Environmental and Bioresource Sciences	Human Ecology Division	Ecology Landscape Architecture Design	https://eco.jbnu.ac.kr/eco/index.do	O	O	N

3. Saemangeum Campus

Track	College	Admission Unit (Division)	Department(Major)	Homepage	Recruitment		Field
					Freshman	Transfer	
Korean	Engineering	Engineering Division 1	Major of IT Convergence Mechatronics Engineering	http://cte.jbnu.ac.kr	O	X	N

※ Major of IT Convergence Mechatronics Engineering : Study for first two years at the Jeonju campus, and 3-4 year study at the Saemangeum Campus.



JBNU Jeonju Campus(Undergraduate)

Application & Admission Schedule

- **Application Schedule**

(1st Round) Sep 22 – Oct 3, 2025

(2nd Round) Nov 5 – Nov 19, 2025

- **Admission Schedule : Mar 2026**

Admission Requirements

- **Korean Track**

1) TOPIK Level 2 or higher

※ Applicants with TOPIK Level 2 must additionally complete **two semesters** at the JBNU Korean Language Education.

2) Course Completion Certificate from Korean Language Education in Korea(Level 4 or higher)

3) JBNU Korean Language Proficiency Test Level 2 or higher(only for students recommended by the JBNU International Center)

- **English Track**

(Engineering and Science, International Studies)

- IELTS 5.5, TEPS 600, TOEFL iBT 71

Scholarship System for Undergraduate Students

Admission Scholarship

•Housing Support for Freshmen

USD 1,000(USD 500 per semester X 2semester, total of two semester)

•First Semester Scholarship

Varies based on your Language Level

※ TOPIK Level 6 or IELTS 8
(Full tuition waiver)

Academic Excellence Scholarship *(from 2nd semester)*

• Based on GPA from the previous semester

• Tuition reduction ranging from 20% to 100%

TOPIK Scholarship

• Improve TOPIK Level scores after admission

• Scholarships are granted for each attainment of TOPIK Level 4 or higher

Additional Opportunities

• On-campus work programs

- Campus Buddy Program
- Social Media Supporter (Local Government)
- Administrative Assistant (Work-Study Program)
- Global Study Group

Get in Touch with Us

JBNU

▶ Undergraduate Admissions:
admissionu@jbnu.ac.kr

▶ Graduate Admissions:
admissiong@jbnu.ac.kr

▶ Feeling Korea Program:
hanalee@jbnu.ac.kr

▶ Korean Language Education Center:
jbnuklec@jbnu.ac.kr

Instagram

@jbnu_international_affairs



Instagram

@jbnuklec

If you have any questions, please don't hesitate to contact us !